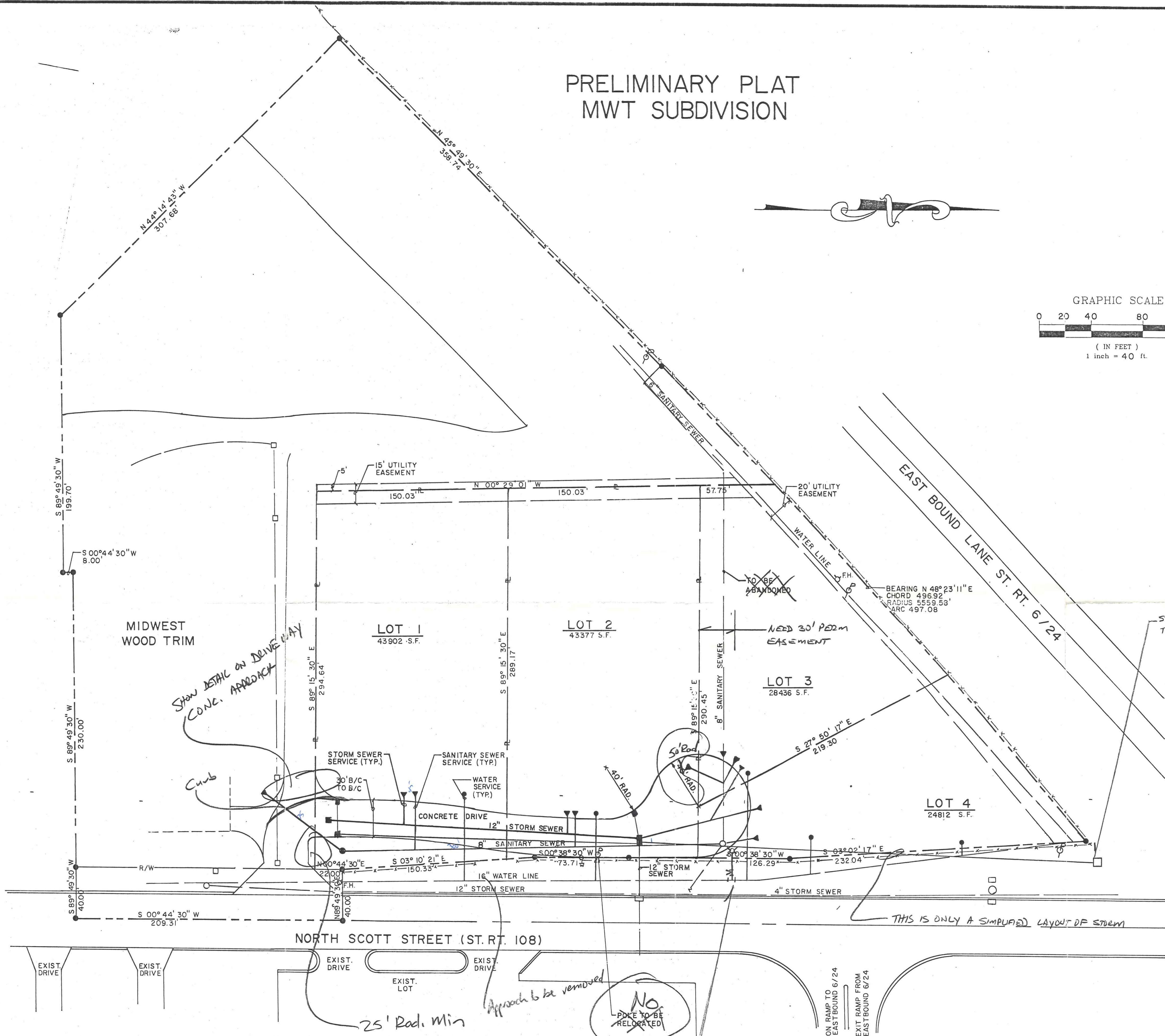
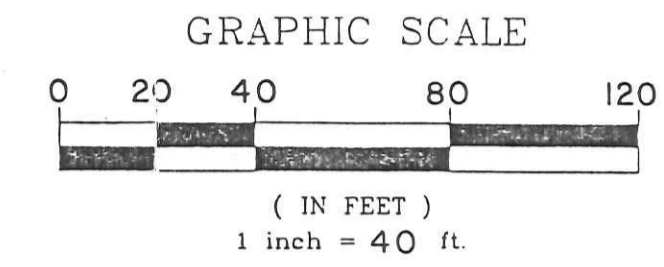
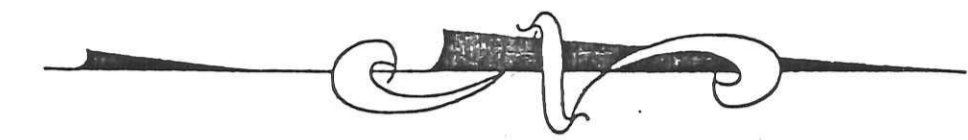


PRELIMINARY PLAT MWT SUBDIVISION



*Show Detail on DRIVE WAY
CONC. APPROACH*

Curb

THIS IS ONLY A SIMPLIFIED LAYOUT OF STORM

Approach to be removed

NO
POLE TO BE RELOCATED

6' Fire Hydr. To be Installed

25' Rad. Min

POGGEMEYER
ENGINEERS - ARCHITECTS

FEB 08 1995

PRINTED

*2/21/95
MSG*

ANY INFORMATION OR DATA ON THIS DRAWING IS NOT INTENDED TO BE SUITABLE FOR REUSE BY ANY PERSON, FIRM OR CORPORATION OR ANY OTHERS ON EXTENSIONS OF THIS PROJECT OR FOR ANY USE OR ON ANY OTHER PROJECT. ANY REUSE WITHOUT WRITTEN VERIFICATION AND ADAPTATION BY THE ENGINEER, ARCHITECT OR SURVEYOR FOR THE SPECIFIC PURPOSE INTENDED WILL BE AT THE USERS SOLE RISK AND WITHOUT LIABILITY OR LEGAL EXPOSURE TO THE ENGINEER, ARCHITECT OR SURVEYOR.

PRELIMINARY PLAT



POGGEMEYER DESIGN GROUP, INC.
ARCHITECTS ENGINEERS PLANNERS
P.O. BOX 7040
WAYNE AVENUE
DELIANCE, OHIO 43512

MWT SUBDIVISION
NAPOLEON, OHIO

DATE	1/7/95
CHECKED BY	KAM
DRAWN BY	M.E.K.
REVISION	

JOB NUMBER	7171-002
------------	----------